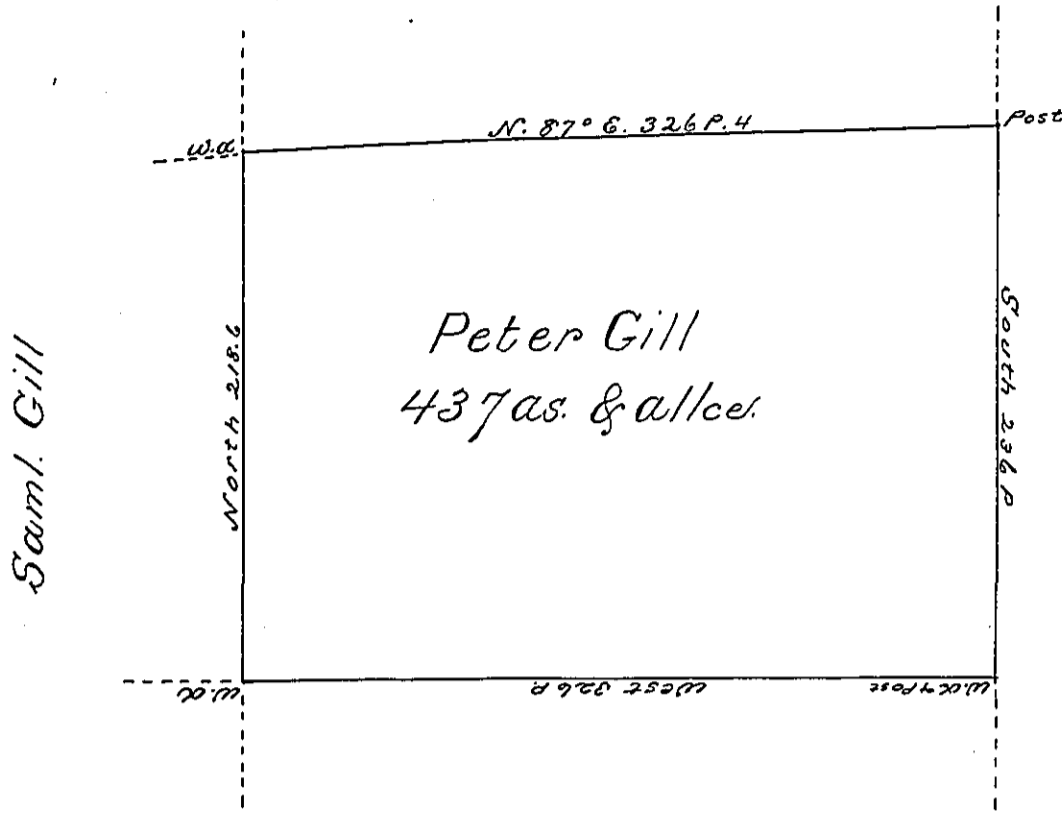


Stephen Moylan



Geo. Gill

Situate on the East side of French Creek
 in Allegheny County containing 437 acres and all-
 owance of Six pcent. &c. Surveyed the 20th. day of
 June 1795 In pursuance of a Warrant bearing date
 the 10th. day of April 1793.

Wm. Power Dy Sr.
 To Daniel Brodhead Esqr }
 Surveyor General }

IN TESTIMONY that the above is a copy of the original remaining on file in
 the Department of Internal Affairs of Pennsylvania, made
 conformably to an Act of Assembly approved the 16th day of
 February, 1833, I have hereunto set my Hand and caused
 the Seal of said Department to be affixed at Harrisburg,
 this third day of October 1899

James W. Latta
 Secretary of Internal Affairs.